

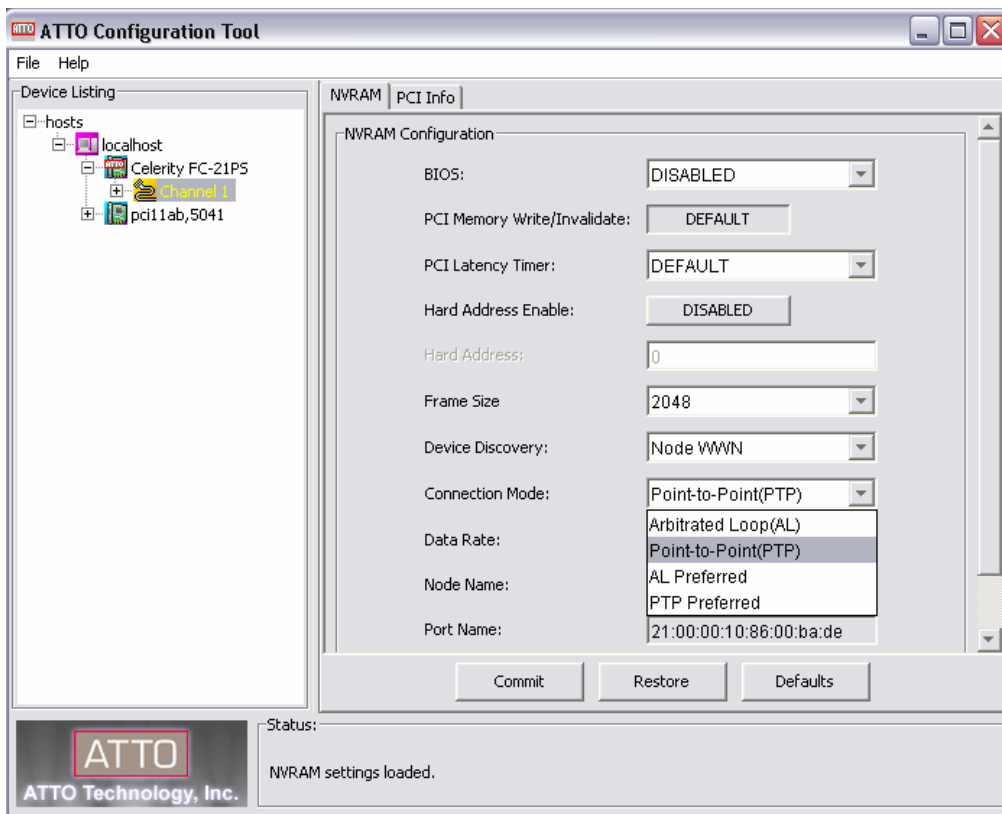


## Facilis Technology, Inc. Technical Note

TN-013

### Instructions for configuring clients for switch connectivity.

1. Install the Atto Configuration Tool located in the Utilities folder on the Facilis TerraBlock install CD (install Mac or PC version depending on your platform).
2. Launch the Atto Configuration Tool.
3. The connection mode for the Atto card channel must be changed from “Arbitrated Loop” (default) to “Point to Point” for proper switch connectivity.
4. Hit “Commit” after “Point to Point” is selected. Restart the system.



5. Check the connection mode for all clients connecting to the switch.
6. Check to be sure the Atto card connection mode is set to “Point to Point” for the Atto card channel in the TerraBlock Server that will be connecting to the switch.

*Note: The TerraBlock server can have multiple channels per Atto card. Each channel's settings are unique. Depending on your configuration, one or both channels will need to be changed.*